

Batterlution LFPWall 10K

10240Wh/51.2V/200Ah



About the battery system

Batterlution LFPWall 10K is an intelligent battery system with an integrated BMS. It is mainly intended for residential and small commercial applications for storing not only solar electricity. The battery system is fully compatible with single-phase or three-phase low-voltage hybrid inverters. It is suitable for storing excess energy, balancing peaks or as a backup power supply (back-up). The battery system can be expanded in parallel as needed.

GOTION HIGH-TECH battery cell

Battery cells are made from the leading manufacturer Gotion High-Tech, a member of the Volkswagen Group.

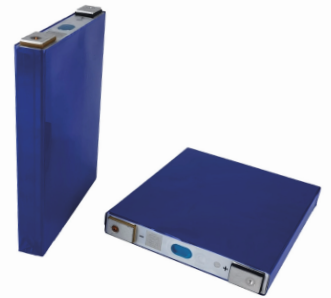
102 Ah | 3.2V | LiFePo4 Lithium-ion. Cell model - IFP50160116A-102Ah.

Battery warranty is 6000 cycles or 10 years from commissioning.

Compatible with hybrid inverters and their BMS protocols:



国轩高科
GOTION HIGH-TECH



and more

Batterlution LFPWall 10K

- 51.2 V, 200 Ah, 10.24 kWh
- Parallel expandable
- Compact design
- Quick plug & play installation
- Automatic addressing of multiple batteries
- Protection IP65



Batterlution LFPWall 10K - Technical specification

Model Type	LFPWall 10K
Capacity	10.24 kWh
Capacity Ah	200 Ah
Recommended SOC	10 % ~ 100 %
Usable capacity	9.2 kWh
Nominal Voltage	51.2 V
Operating Voltage range	44.8 V ~ 57.6 V
Maximim charging/discharging current	140 A / 200 A
Expandability	up to 15 batteries in parallel
BMS	Intelligent multi-point cell monitoring and balancing
Warranty	10 years or 6000 cycles
Operating temperatures	Charging: 0 °C ~ 45 °C / Discharging: -20 °C ~ 45 °C
Weight	92 kg
Dimensions	820 x 145 x 580 mm
Connectivity	Link in/Link out between batteries, CAN/RS485 to inverter
Certifications	CE, CB, IEC62619, UN38.3, MSDS
Optional	Self-extinguishing module
Connectors	Plug & Play connectors